



City of Rossland

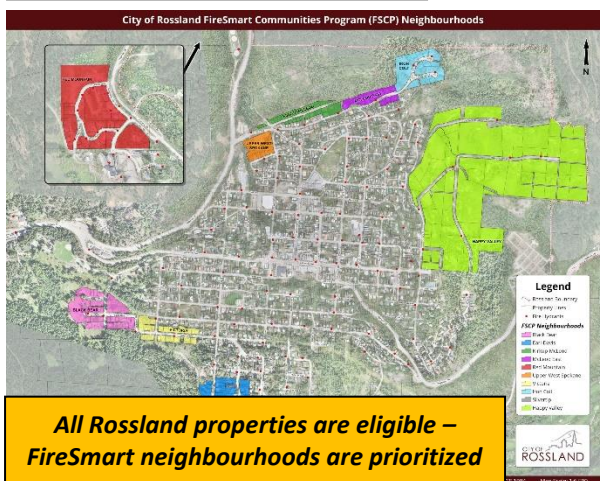
2023 FireSmart Neighbourhood Program

FireSmart Rebate Program – June 1, 2023

FireSmart Rebate Program for Rossland's FireSmart Neighbourhood Program Homeowner's



See application for a list of rebate eligible FireSmart activities



All Rossland properties are eligible – FireSmart neighbourhoods are prioritized



Homeowners should apply now to start the hazard assessment/reduction – rebate process

What? - Rossland's 'FireSmart Rebate Program' is offering some property owners a rebate of up to \$500 for qualified FireSmart hazard reduction work performed on their homes and yards. Homeowners will be reimbursed for 50% of material and labor costs with a maximum \$500 rebate per property on a \$1,000 or more expenditure.

Example: Alex spends \$300 on materials and 8 hours labor installing a section of non-combustible siding at the base of the homes exterior wood siding (creating 15 cm of ground-to-siding non-combustible clearance).

Alex's expense total is \$525 (\$300 mat'l's + 8 hrs @ \$28 = \$225)

Alex's rebate would be \$262 (50% of \$525)

Who? – All Rossland property owners can apply – properties located in Rossland's FireSmart Neighbourhood Program 'recognized' neighbourhoods – are especially encouraged to apply and will be given priority. Currently, there are nine recognized neighbourhoods in Rossland shown in the sample map at left and online at:

<https://rossland.ca/rossland-firesmart-program/>

How? - Homeowners eligible to participate in the FireSmart Rebate Program can apply for a free FireSmart hazard assessment on their home and yard. Following the assessment, homeowners will work with the FireSmart assessor / advisor to identify priority hazard items and then perform the required hazard reduction work. Material costs and labor (reimbursed at \$28.54 per hour) are tracked and receipts submitted to the FireSmart advisor during the follow-up assessment visit.

To date - 45 properties received an average rebate of \$415.

Send an email to rosslandfiresmart@telus.net with your address and phone number to open an application.

Qualified applications will be serviced on a first come - first serve basis – Rebate funds are limited – Applicants are advised to submit applications as soon as possible.