

CITY OF ROSSLAND

Annual Water Report - 2013



Introduction

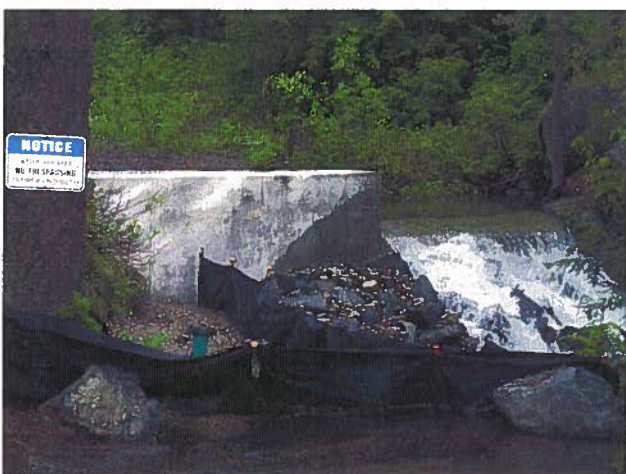
The City of Rossland provides drinking water to users connected to the Rossland Water System. This report is provided to City Council for their information, and in fulfillment of the City's obligations under the Provincial Drinking Water Act and associated regulations, as well as the terms and conditions of the City's Water System Operating Permit. Enforcement of the regulations and issuance of water system permits is the responsibility of the Interior Health Authority's Drinking Water Officer.

Raw water is collected at Hanna and Murphy Creek intakes and transmitted by pipeline ranging in size from 150mm to 250mm to Ophir Reservoir which has a capacity of approximately 165,000 cubic meters. Ophir Reservoir water is piped to Star Gulch Reservoir along with raw water from Topping Creek intake to fill approximately 120,000 cubic meters. During the Spring Freshet, all three creeks, and the reservoir, overflow water for many months as supply exceeds consumption.

Raw Water

The City's raw water source is entirely surface water in three alpine creek catchments: Topping Creek, Hanna Creek and Murphy Creek, with intakes adjacent to Highway 3B between Red Mountain and Nancy Greene Summit, ranging in elevation from 1200m to 1550m above sea level. A map of the intake locations is provided in Appendix A.

The City of Rossland inspects intakes, pipes and areas immediately around the intakes on a monthly basis in summer, while winter and spring access limits inspections to a couple of times by snowshoe or snowmobile. Much of the watershed is used for recreation, with skiing, mountain biking, horse riding and hiking activities common. The City has erected signage near facilities and along hiking trails indicating that the area is part of the City's watershed.



Topping Creek Raw Water Intake

The City sampled and undertook complete testing for the one raw water source in 2013, the result of this test is provided in Appendix B.

Hydrant Flushing

The City flushes all fire hydrants annually as a health requirement during the month of May to help maintain water quality with our aging infrastructure. In the fall the City will flush specific hydrants around town where there is minimal flows.

Valve Replacement

The City has an ongoing program to replace aging valves in the water distribution system for better control of directional flushing as well as less disruption when a water repair is required.

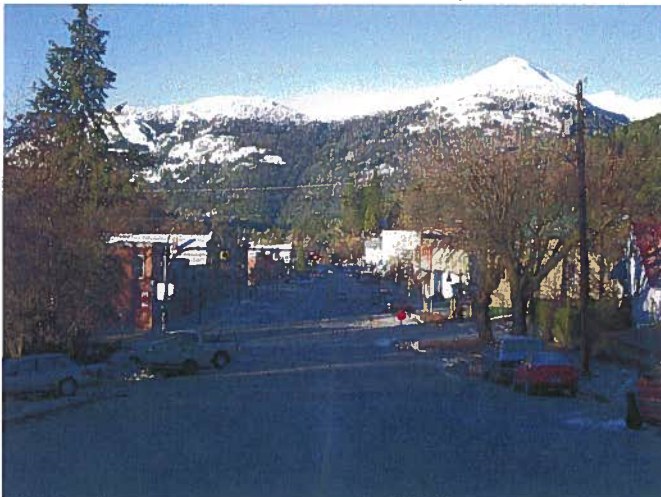


Treated Water

Immediately south of the Star Gulch Reservoir is the City's Water Treatment Plant located adjacent to Highway 3B. This facility was built approximately 15 years ago and comprises of three main buildings – two slow sand filter buildings and one control and pumping building. There are six slow sand filter bays drawing water directly from Star Gulch Reservoir. These bays are monitored daily and periodic maintenance includes the removal of build up on the surface of the Smutzdecke (active biological layer). Water passes through the filter bays and is then chlorinated using chlorine gas before being stored in the clearwater tank prior to distribution to the City.

Disinfection equipment is capable of providing sufficient dosage to the water at both high and low flow periods to ensure an appropriate, and compliant, level of residual disinfection capability throughout the distribution system. The dual control chlorinators can provide 0-9 kg per day during low water flow periods and 0-22 kg per day during high demand.

The chlorine disinfection system is maintained by City staff trained to operate the system and who provide scheduled maintenance/overhaul services, as well as do



Downtown Rossland

repair work as required. A stock of extra parts and equipment, as well as quick-connect plumbing and electrical connections ensure complete redundancy of the system at all times, to minimize the chance of extended breakdowns.

Distribution System

The City's distribution system is comprised of a variety of pipe materials, from ductile iron cement lined, mild steel, asbestos cement, copper, PVC and Polyethylene. Replacement of older pipe materials is a slow process, and as opportunities arise through subdivision, building permits, paving work or detected leaks, the City is replacing pipes and service connections.

The City, due to the range of elevations throughout the system, has five pressure zones, these are described below.

Red Mountain Zone

This zone is pumped from the treatment plant up to a concrete reservoir on Granite Mountain above the development in the base area of Red Mountain. A single pipeline in and out of the Granite reservoir proves to be an operational challenge for maintaining high quality water with low occupancy and slower development contributing to lower consumption rates in the base area. This storage also provides backup supply for the remainder of the City in the event of a power failure or other issues with the treatment plant.

Upper Rossland Zone

The Upper Rossland Zone is fed by gravity from the Treatment Plant. This zone essentially services properties at elevations at and above the downtown core.



Kirkup Zone

The Kirkup zone is supplied from a small pump station at the intersection of Kirkup Ave and Plewman Way which is in the Upper Rossland Zone. Water is pumped to a bolted steel reservoir located on Mount Kirkup and feeds residential properties that are located above the minimum pressure zone provided by gravity from the treatment plant.

Lower Rossland Zone

Two Pressure Reducing Valve (PRV) stations separate the upper and lower Rossland Zones. These are located outside City Hall on Columbia Avenue, and on Park Street above the Pinewood subdivision. This zone encounters operational challenges with older infrastructure and low flows in some sections.

Redstone Zone

With the completion of the first phase of the Redstone subdivision, residential water services were provided to this area. A PRV station along Esling Drive reduces the pressure from over 230 psi to around 20 psi to ensure that pressures within the subdivision do not exceed 150 psi.

Star Gulch Reservoir



Water Sampling and Testing Program

Drinking water delivered to users of the City system is subject to a comprehensive and rigorous testing program that ensures quality drinking water. Continuous monitoring of free chlorine residual readings, temperature and pH in the drinking water is accomplished with Hach meters located in the Water Treatment plant (disinfection takes place here). On a daily basis City staff test samples of drinking water from the plant. On a weekly basis City Staff test separate locations for free chlorine residuals (i.e. the presence of chlorine in the water). These tests are conducted with hand-held Hach meters that measure the minute amounts of disinfectant that must be in the drinking water throughout the system to meet regulations. Sample points are located at the start, middle and end of the entire City water distribution system to ensure the effectiveness of the disinfection program. At least 0.2 milligrams of chlorine must be present in every litre of water to meet these standards.

Over six hundred manual chlorine residual tests were conducted by City staff in 2013 at the 5 locations. The lowest residual reading in the distribution system was 0.97 mg/l and the highest reading was 2.15 mg/l. Whenever staff determine that the readings may be trending too low they slightly increase the dosage of disinfectant at the Water Treatment Centre and confirm the results during the next day's tests indicating residual levels have increased.

Water samples are sent, on a weekly basis, to the Caro Environmental Services laboratories to be tested for the presence/absence e-coli and total coliform bacteria. City staff draws these samples and sends them to the Kelowna laboratory. Results are returned to the City within a week.



The standard protocol when a water sample is found to contain the presence of coliforms, however minute, is to resample the water immediately at the same location and resubmit for testing. The provincial Drinking Water Officer will determine if any action by the purveyor is necessary only after a second test also shows the presence of coliforms.

In 2013, the City submitted approximately 130 samples for ecoli and coliform testing and none came back positive for either ecoli or coliforms.

Turbidity is monitored continuously after filtration with the highest reading at 0.15 and the lowest reading of 0.05 during 2013.

See Appendix C for test results

Records

The City uses SCADA (System Control and Data Acquisition) to continuously monitor water quality, flow, pressure and storage. This system assists City staff to maintain a safe drinking water supply by advising when dosage or residual disinfectant levels are outside of set parameters (either high or low) for the system. The SCADA system will alert staff by cell phone or computer message to ensure that corrections can be made before water quality can be adversely affected.

This data is stored at the Water Treatment plant. This data is forwarded on a monthly basis and is used to provide information to the provincial Drinking Water Officer, including the completion of this annual report.

Flow records are taken daily to determine the volume of treated water being produced and distributed. Future upgrades of this system would include the installation of further flow meters for raw water and treated water at key points in the distribution system.

Water Consumption

Water consumption in 2013 was more than last year. The total water consumption was 757,093 cubic meters as compared to 724,825 cubic meters in 2012.

Consumption at Red Mountain is able to be measured separately as all of the water for this zone is pumped and passes through a flow meter. Typically, the consumption at Red Mountain is lower per unit than in the rest of the City, this is a function of less irrigated landscaping per lot, and lower occupancy levels in the summer.

Minimum daily demands are fairly constant in town throughout the year, ranging between 993 to 3,306 cubic meters per day.

Maximum day demands occur during summer (June-September) and range approximately from 1,427 to 3,968 cubic meters for irrigation periods.

New Connections

In 2013, the City received 9 building applications for new dwellings which is up from 8 in 2012.

Regulatory and Administration

Water Metering and Conservation Program

The City approved Policy #0440 "Residential Water Conservation Incentive Program" in May 2009. The Objectives are the City will provide to every existing residential home with a water meter.

There were 1705 water connections in early 2013 and 1615 of those were metered. By the end of 2013 there were 1723 total connections and 1667 were metered.



Emergency Response Plan and Dam Management

In 2013, as part of the review of the emergency preparedness, the City worked with Engineers and completed a formal geotechnical assessment of Star Gulch reservoir and staff submitted the Emergency Preparedness Plan and the Operation, Maintenance and Surveillance Plan for Star Gulch Dam to the Ministry. The City is continuing to work with the Ministry to review and complete the dam safety assessment on Star Gulch in 2014.

Staffing

Trained, certified City staff work to maintain the 24 hour per day supply of safe drinking water to users in Rossland. This is accomplished by ensuring that staff is on call every day of the year and that the previously mentioned surveillance, operating and control system (SCADA) is operating continuously. Water distribution work is also done by staff certified for their tasks: water main replacement, water service installation, fire hydrant and valve maintenance. Special tasks such as reservoir cleaning and leak detection are undertaken by qualified staff with the proper equipment and experience to complete the work.

The City has two Water Treatment – Level 1 and one Water Treatment – Level 2 Operator, two Water Distribution Level 1, one Water Distribution Level 2 and one Water Distribution Level 3 Operator, and five operators trained in Chlorine Handling.

Conclusion

This 2013 City of Rossland Water System Report is presented to the public, by way of posting on the City of Rossland website, as required by the British Columbia Drinking Water Protection Act and Regulations, as well as to meet the terms and conditions of the City's Water System Operating Permit CITYRO 950 issued by the Interior Health Drinking Water Officer.

Appendix A – Watershed Map

Appendix B – CARO Water Analysis
Hanna Creek 2013

Appendix C – CARO Drinking Water
Analysis 2013

Appendix D – Rossland Water
Consumption 2009-2013

Appendix E – Rossland Water Flows –
Highs & Lows 2005-2013

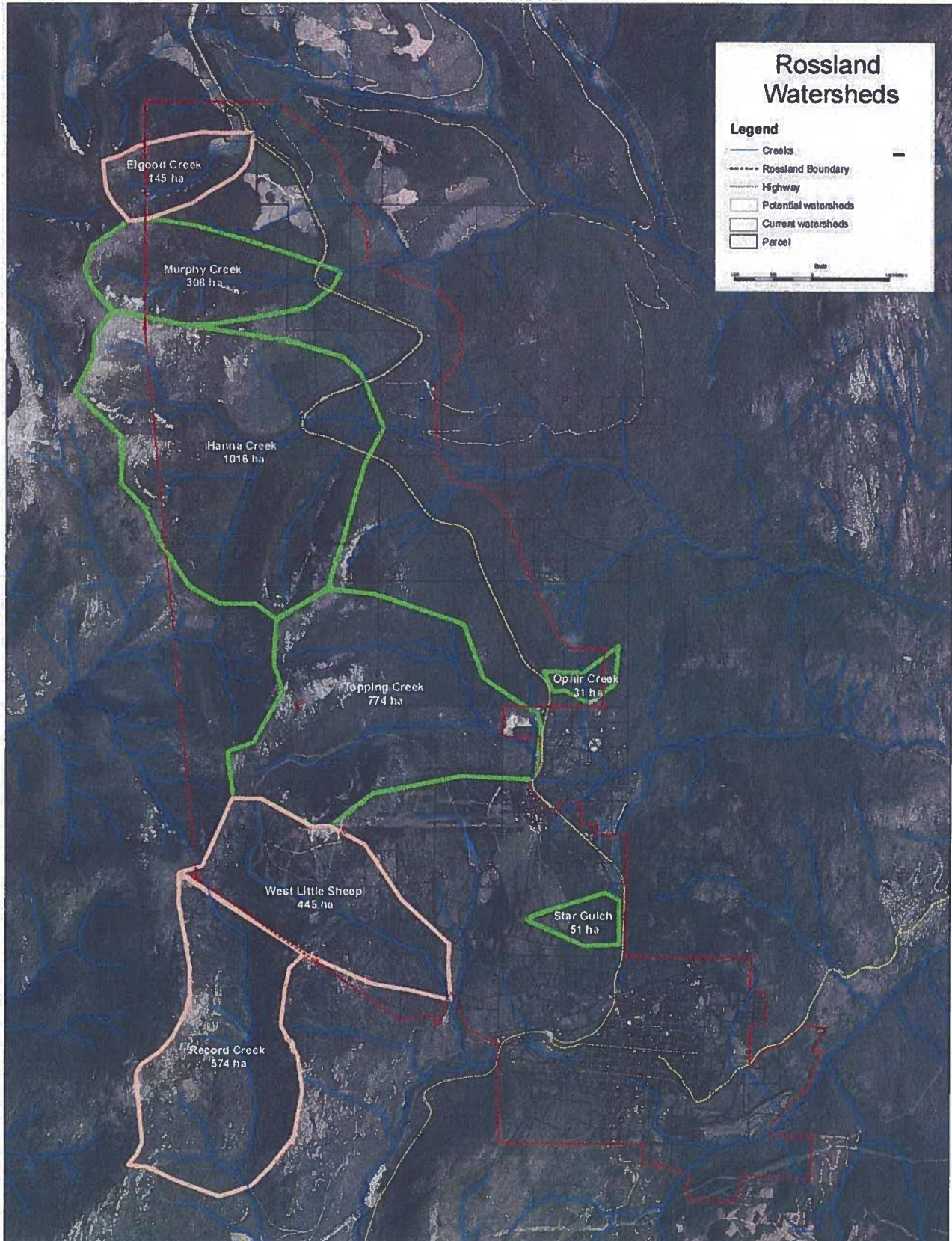
Darrin Albo
Manager of Operations
City of Rossland
Box 1179 Rossland BC
V0G1Y0 Canada

darrin@rossland.ca
250-362-2328





Appendix A - Watershed Map



CERTIFICATE OF ANALYSIS

REPORTED TO	Rossland, City of 1899 Columbia Ave- PO Box 1179 Rossland, BC V0G 1Y0	TEL	1-250-368-7283
		FAX	1-250-362-9634
ATTENTION	Darryl Pettitt	WORK ORDER	3090654
PO NUMBER		RECEIVED / TEMP	Sep-11-13 09:40 / 11.0 °C
PROJECT	Drinking Water	REPORTED	Sep-18-13
PROJECT INFO	Water Samples	COC NUMBER	COC No#

General Comments:

CARO Analytical Services employs methods which are conducted according to procedures accepted by appropriate regulatory agencies, and/or are conducted in accordance with recognized professional standards using accepted testing methodologies and quality control efforts, except where otherwise agreed to by the client.

The results in this report apply to the samples analyzed in accordance with the Chain of Custody or Sample Requisition document. This analytical report must be reproduced in its entirety. CARO is not responsible for any loss or damage resulting directly or indirectly from error or omission in the conduct of testing. Liability is limited to the cost of analysis. Samples will be disposed of 30 days after the test report has been issued unless otherwise agreed to in writing.

Issued By:



Jennifer Shanko, ASCT
Administration Coordinator

Please contact CARO if more information is needed or to provide feedback on our services.

Locations:

#110 4011 Viking Way
Richmond, BC V6V 2K9
Tel: 604-279-1499 Fax: 604-279-1599

#102 3677 Highway 97N
Kelowna, BC V1X 5C3
Tel: 250-765-9646 Fax: 250-765-3893

17225 109 Avenue
Edmonton, AB T5S 1H7
Tel: 780-489-9100 Fax: 780-489-9700

www.caro.ca

REPORTED TO PROJECT Rossland, City of
Drinking Water

WORK ORDER REPORTED 3090654
Sep-18-13

Analysis Description	Method Reference (* = modified from)		Location
	Preparation	Analysis	
Alkalinity, total	N/A	APHA 2320 B	Kelowna
Chloride in Water by IC	N/A	APHA 4110 B	Kelowna
Colour, True at 410 nm	N/A	APHA 2120 C *	Kelowna
Conductivity in Water	N/A	APHA 2510 B	Kelowna
Cyanide, Total in Liquids	APHA 4500-CN C	APHA 4500-CN E	Kelowna
E. coli (Partition Method)	N/A	APHA 9222 G	Kelowna
Fluoride in Water by IC	N/A	APHA 4110 B	Kelowna
Hardness as CaCO3 (CALC)	N/A	APHA 2340 B	Richmond
Nitrate-N in Water by IC	N/A	APHA 4110 B	Kelowna
Nitrite-N in Water by IC	N/A	APHA 4110 B	Kelowna
pH in Water	N/A	APHA 4500-H+ B	Kelowna
Sulfate in Water by IC	N/A	APHA 4110 B	Kelowna
Total Coliforms (by Endo)	N/A	APHA 9222 B	Kelowna
Total Recoverable Metals	APHA 3030E *	APHA 3125 B	Richmond
Transmissivity at 254nm	N/A	APHA 5910 B	Kelowna
Turbidity	N/A	APHA 2130 B	Kelowna

Note: The numbers in brackets represent the year that the method was published/approved

Method Reference Descriptions:

APHA Standard Methods for the Examination of Water and Wastewater, American Public Health Association

Glossary of Terms:

MRL Method Reporting Limit
 < Less than the Reported Detection Limit (RDL) - the RDL may be higher than the MRL due to various factors such as dilutions, limited sample volume, high moisture, or interferences
 AO Aesthetic objective
 MAC Maximum acceptable concentration (health-related guideline)
 % Percent W/W
 CFU/100mL Colony Forming Units per 100 mL
 Color Unit Colour referenced against a platinum cobalt standard
 mg/L Milligrams per litre
 NTU Nephelometric Turbidity Units
 pH units pH < 7 = acidic, ph > 7 = basic
 uS/cm Microsiemens per centimeter

SAMPLE ANALYTICAL DATA

REPORTED TO PROJECT Rossland, City of
Drinking Water

WORK ORDER REPORTED 3090654
Sep-18-13

Analyte	Result / Recovery	Canadian DW Guideline	MRL / Limit	Units	Prepared	Analyzed	Notes
---------	-------------------	-----------------------	-------------	-------	----------	----------	-------

Anions

Sample ID: Hanna Creek (3090654-01) [Water] Sampled: Sep-10-13 09:00

Alkalinity, Total as CaCO ₃	14			1 mg/L	N/A	Sep-11-13	
Chloride	2.01	AO ≤ 250		0.10 mg/L	N/A	Sep-13-13	
Fluoride	< 0.10	MAC = 1.5		0.10 mg/L	N/A	Sep-13-13	
Nitrogen, Nitrate as N	< 0.010	MAC = 10		0.010 mg/L	N/A	Sep-13-13	
Nitrogen, Nitrite as N	< 0.010	MAC = 1		0.010 mg/L	N/A	Sep-13-13	
Sulfate	1.5	AO ≤ 500		1.0 mg/L	N/A	Sep-13-13	

General Parameters

Sample ID: Hanna Creek (3090654-01) [Water] Sampled: Sep-10-13 09:00

Colour, True	12	AO ≤ 15		5 Color Unit	N/A	Sep-11-13	
Conductivity (EC)	44			2 uS/cm	N/A	Sep-11-13	
Cyanide, total	< 0.010	MAC = 0.2		0.010 mg/L	Sep-17-13	Sep-17-13	
pH	7.35	AO = 6.5 - 8.5		0.01 pH units	N/A	Sep-11-13	
Turbidity	0.2	See Guidelines		0.1 NTU	N/A	Sep-12-13	
UV Transmittance @ 254nm	87.8			0.1 %	N/A	Sep-16-13	

Calculated Parameters

Sample ID: Hanna Creek (3090654-01) [Water] Sampled: Sep-10-13 09:00

Hardness, Total (Total as CaCO ₃)	15.5			5.0 mg/L	N/A	N/A	
Solids, Total Dissolved	20.8			2.0 mg/L	N/A	N/A	

Total Recoverable Metals

Sample ID: Hanna Creek (3090654-01) [Water] Sampled: Sep-10-13 09:00

Aluminum, total	< 0.05	AO ≤ 0.1		0.05 mg/L	Sep-13-13	Sep-14-13	
Antimony, total	< 0.001	MAC = 0.006		0.001 mg/L	Sep-13-13	Sep-14-13	
Arsenic, total	< 0.005	MAC = 0.01		0.005 mg/L	Sep-13-13	Sep-14-13	
Barium, total	< 0.05	MAC = 1		0.05 mg/L	Sep-13-13	Sep-14-13	
Beryllium, total	< 0.001			0.001 mg/L	Sep-13-13	Sep-14-13	
Boron, total	< 0.04	MAC = 5		0.04 mg/L	Sep-13-13	Sep-14-13	
Cadmium, total	< 0.0001	MAC = 0.005		0.0001 mg/L	Sep-13-13	Sep-14-13	
Calcium, total	4			2 mg/L	Sep-13-13	Sep-14-13	
Chromium, total	< 0.005	MAC = 0.05		0.005 mg/L	Sep-13-13	Sep-14-13	
Cobalt, total	< 0.0005			0.0005 mg/L	Sep-13-13	Sep-14-13	
Copper, total	0.002	AO ≤ 1		0.002 mg/L	Sep-13-13	Sep-14-13	
Iron, total	< 0.1	AO ≤ 0.3		0.1 mg/L	Sep-13-13	Sep-14-13	
Lead, total	< 0.001	MAC = 0.01		0.001 mg/L	Sep-13-13	Sep-14-13	
Magnesium, total	1.2			0.1 mg/L	Sep-13-13	Sep-14-13	
Manganese, total	< 0.002	AO ≤ 0.05		0.002 mg/L	Sep-13-13	Sep-14-13	
Mercury, total	< 0.0002	MAC = 0.001		0.0002 mg/L	Sep-13-13	Sep-14-13	
Molybdenum, total	< 0.001			0.001 mg/L	Sep-13-13	Sep-14-13	
Nickel, total	< 0.002			0.002 mg/L	Sep-13-13	Sep-14-13	
Phosphorus, total	< 0.2			0.2 mg/L	Sep-13-13	Sep-14-13	

SAMPLE ANALYTICAL DATA

REPORTED TO PROJECT Rossland, City of Drinking Water

WORK ORDER REPORTED 3090654 Sep-18-13

Analyte	Result / Recovery	Canadian DW Guideline	MRL / Limit	Units	Prepared	Analyzed	Notes
---------	-------------------	-----------------------	-------------	-------	----------	----------	-------

Total Recoverable Metals, Continued

Sample ID: Hanna Creek (3090654-01) [Water] Sampled: Sep-10-13 09:00, Continued

Potassium, total	0.8		0.2	mg/L	Sep-13-13	Sep-14-13	
Selenium, total	< 0.005	MAC = 0.01	0.005	mg/L	Sep-13-13	Sep-14-13	
Silicon, total	7		5	mg/L	Sep-13-13	Sep-14-13	
Silver, total	< 0.0005		0.0005	mg/L	Sep-13-13	Sep-14-13	
Sodium, total	2.3	AO ≤ 200	0.2	mg/L	Sep-13-13	Sep-14-13	
Uranium, total	0.0002	MAC = 0.02	0.0002	mg/L	Sep-13-13	Sep-14-13	
Vanadium, total	< 0.01		0.01	mg/L	Sep-13-13	Sep-14-13	
Zinc, total	< 0.04	AO ≤ 5	0.04	mg/L	Sep-13-13	Sep-14-13	

Microbiological Parameters

Sample ID: Hanna Creek (3090654-01) [Water] Sampled: Sep-10-13 09:00

Coliforms, Total	260	MAC < 1	1	CFU/100mL	Sep-11-13	Sep-12-13	
Background Colonies	> 200		200	CFU/100mL	Sep-11-13	Sep-12-13	
E. coli	3	MAC < 1	1	CFU/100mL	Sep-11-13	Sep-12-13	


CERTIFICATE OF ANALYSIS

REPORTED TO	Rosland, City of 1899 Columbia Ave- PO Box 1179 Rosland, BC V0G 1Y0	TEL	1-250-368-7283
		FAX	1-250-362-9634
ATTENTION	Darryl Pettitt	WORK ORDER	3081251
PO NUMBER		RECEIVED / TEMP	Aug-21-13 09:35 / 8.0 °C
PROJECT	Drinking Water	REPORTED	Aug-23-13
PROJECT INFO	Water Samples	COC NUMBER	COC no#

General Comments:

CARO Analytical Services employs methods which are conducted according to procedures accepted by appropriate regulatory agencies, and/or are conducted in accordance with recognized professional standards using accepted testing methodologies and quality control efforts, except where otherwise agreed to by the client.

The results in this report apply to the samples analyzed in accordance with the Chain of Custody or Sample Requisition document. This analytical report must be reproduced in its entirety. CARO is not responsible for any loss or damage resulting directly or indirectly from error or omission in the conduct of testing. Liability is limited to the cost of analysis. Samples will be disposed of 30 days after the test report has been issued unless otherwise agreed to in writing.

Issued By:

Jennifer Shanko, ASCT
Administration Coordinator

Please contact CARO if more information is needed or to provide feedback on our services.

Locations:

#110 4011 Viking Way
Richmond, BC V6V 2K9
Tel: 604-279-1499 Fax: 604-279-1599

#102 3677 Highway 97N
Kelowna, BC V1X 5C3
Tel: 250-765-9646 Fax: 250-765-3893

17225 109 Avenue
Edmonton, AB T5S 1H7
Tel: 780-489-9100 Fax: 780-489-9700

www.caro.ca

ANALYSIS INFORMATION

REPORTED TO PROJECT Rossland, City of
 Drinking Water

WORK ORDER REPORTED 3081251
 Aug-23-13

Analysis Description	Method Reference (* = modified from)		Location
	Preparation	Analysis	
E. coli (by CCA)	N/A	APHA 9222 *	Kelowna
Total Coliforms (by CCA)	N/A	APHA 9222 *	Kelowna

Note: The numbers in brackets represent the year that the method was published/approved

Method Reference Descriptions:

APHA Standard Methods for the Examination of Water and Wastewater, American Public Health Association

Glossary of Terms:

MRL Method Reporting Limit
 < Less than the Reported Detection Limit (RDL) - the RDL may be higher than the MRL due to various factors such as dilutions, limited sample volume, high moisture, or interferences
 AO Aesthetic objective
 MAC Maximum acceptable concentration (health-related guideline)
 CFU/100mL Colony Forming Units per 100 mL

SAMPLE ANALYTICAL DATA

REPORTED TO PROJECT Rossland, City of
Drinking Water

WORK ORDER REPORTED 3081251
Aug-23-13

Analyte	Result / Recovery	Canadian DW Guideline	MRL / Limit	Units	Prepared	Analyzed	Notes
---------	-------------------	-----------------------	-------------	-------	----------	----------	-------

Microbiological Parameters

Sample ID: City Hall (3081251-01) [Water] Sampled: Aug-20-13 09:15

Coliforms, Total	< 1	MAC < 1	1	CFU/100mL	Aug-21-13	Aug-22-13	HT
E. coli	< 1	MAC < 1	1	CFU/100mL	Aug-21-13	Aug-22-13	HT

Sample ID: S.L.S. (3081251-02) [Water] Sampled: Aug-20-13 09:30

Coliforms, Total	< 1	MAC < 1	1	CFU/100mL	Aug-21-13	Aug-22-13	HT
E. coli	< 1	MAC < 1	1	CFU/100mL	Aug-21-13	Aug-22-13	HT

Sample ID: W.T.P. (3081251-03) [Water] Sampled: Aug-20-13 09:45

Coliforms, Total	< 1	MAC < 1	1	CFU/100mL	Aug-21-13	Aug-22-13	HT
E. coli	< 1	MAC < 1	1	CFU/100mL	Aug-21-13	Aug-22-13	HT

Sample / Analysis Qualifiers:

HT The sample was prepared / analyzed past the recommended holding time.

APPENDIX D

**ROSSLAND WATER CONSUMPTION
2009-2013**

	2009	2010	2011	2012	2013
January	64662	68663	56230	50482	53491
February	64091	61362	53097	47482	52612
March	66855	62471	59542	53762	57500
April	61561	62562	54956	50212	50873
May	73287	70886	60844	56926	65888
June	97812	67889	62548	60611	74757
July	110270	114287	89100	78101	99716
August	105248	111783	106997	100793	85315
September	85473	71240	76889	73796	62511
October	61004	60265	51258	58909	56520
November	57150	53475	52883	43911	48823
December	67579	55265	52266	49840	49087
TOTAL	914992	860148	776610	724825	757093
%		-6%	-17%	-26%	-21%

# of connections	1662	1681	1692	1707	1723
# of meters	443	647	1254	1615	1667

HIGHEST AND LOWEST WATER FLOW FOR THE YEAR

DATE	YEAR	CUBIC METERS
1-Dec	2005	1331
15-Aug	2005	4840
7-Nov	2006	1364
25-Jul	2006	6215
4-Oct	2007	1507
17-Jul	2007	6776
17-Nov	2008	1584
15-Jul	2008	4862
9-Nov	2009	1584
5-Aug	2009	5390
16-Dec	2010	1276
6-Aug	2010	4950
3-Nov	2011	1331
12-Jul	2011	4950
10-Nov	2012	1100
16-Aug	2012	4330
31-Jan	2013	993
22-Jul	2013	3968